

WELCOME
TO



PRIME TRADES

PRIMETRADES.LIVE



Everyone Have **Desires**



Money



Travel



Bungalow



Time Freedom



Car



Every time looking for the opportunity but confused???

Which is the Right Path?



PRIMETRADES.LIVE



ABOUT PRIME TRADES

Marty Schwartz, a prosperous trader with an estimated net worth of \$1.5 billion, is renowned for his trading strategies and ability to yield consistent returns over extended periods. Schwartz's expertise spans swing trading, day trading, and trend following. He began his career as a financial advisor in the early 1980s before transitioning to trading and subsequently founding his hedge fund, Martec, in the 1990s.

Schwartz successfully managed the fund, generating returns exceeding 20% for several years. Through trading, he transformed a \$100,000 portfolio into \$2 million in a mere two years. Schwartz emphasizes the crucial role of discipline and patience in trading. He underscores the importance of having a trading plan, a passion for trading, and a drive for success.

He also personally hand-draws his charts on paper, which he believes helps him establish a better connection with his instruments. Additionally, he subscribes to numerous market newsletters, synthesizing the information to develop his own system. Schwartz's exceptional success can be attributed to his discipline, work ethic, and consistent routine.

Marty Schwartz's advice for Forex traders: "The key to trading success is emotional discipline. If intelligence were the key, there would be a lot more people making money trading... I know this will sound like a cliché, but the single most important reason that people lose money in the financial markets is that they don't cut their losses short"

PRIMETRADES.LIVE



ABOUT PRIME TRADES

Becoming a dream achiever and a networker's network, we strive to discover innovative methods to enhance our organization and attain a high-quality lifestyle. We prioritize understanding the needs of our investors. With 15 years of experience in the TRADING industry, we offer the next generation of opportunities for youths to earn money.

PRIMETRADES.LIVE



ABOUT

MISSION AND VISION

MISSION

To be dream achievers and networker's net worth Our mission is to empower and educate our clients, to help them develop optimal strategies and offer the largest variety of assets and best possible investment terms. Allowing each investor to find the ideal route to receive the best returns on investment.

VISION

We have the best Forex traders and our vision is to make a profit for our clients and control their risk with high profit in the Forex trading market. We will always ensure that engagement in activities that will eradicate poverty by empowering our partners to move up to the next best level



WHY PRIME TRADES?

You want results. We have found that the best way to get them is with up front research- of your company, competitors, target market and customer psychographics. Only after we fully understand you and your customers, do we recommend a plan of attack.



Forex Trading is a **Trillion \$ Dollar** industry

You can make your career
very easily from here.



PRIMETRADES.LIVE

Introduction to FOREX

- The **foreign exchange market (currency, forex, or FX) market** is where currency trading takes place.
- The Foreign Exchange market, is the largest financial market in the world, with a daily average turnover of **US\$3.2 trillion** —
(Figures represented are of the year 2008)
- "Foreign Exchange" is the simultaneous buying of one currency and selling of another. Currencies are traded in pairs, for example Euro/US Dollar (EUR/USD) or US Dollar/ Indian Rupees (USD/INR).



About Forex

- Banks and other official institutions facilitate the buying and selling of foreign currencies.
- Transactions involve one party purchasing a quantity of one currency in exchange for paying a quantity of another.
- The purpose of FX market is to facilitate trade and investment.



Some Interesting facts...

- Average daily turnover in global foreign exchange markets is estimated at \$3.21 trillion.
- The Break Up of this \$3.21 is as follows:-
 - \$1.005 trillion in spot transactions
 - \$362 billion in outright forwards
 - \$1.714 trillion in foreign exchange swaps
 - \$129 billion estimated gaps in reporting
- 85% of all daily transactions involve trading a group of currencies known as the "Majors."





PRIME TRADES

WWW.PRIMETRADES.LIVE

PRIMETRADES.LIVE

JOINING PACKAGES



PRIME TRADES

\$100 - \$600

\$601 - \$3000

\$3001+above

PRIMETRADES.LIVE

TYPES OF INCOME

We can earn a lot with these incomes

SPONSOR INCOME

ROI INCOME

LEVEL INCOME

BOOSTER INCOME

SALARY INCOME

REWARDS



ROI (Return Of Investment)



PRIME TRADES

\$100 - \$600

10% MONTHLY

\$601 - \$3000

11% MONTHLY

\$3001 - above

12% MONTHLY



PRIMETRADES.LIVE

BOOSTER INCOME



3 ID	30% INCREMENT IN SELF ROI
5 ID	60% INCREMENT IN SELF ROI
9 ID	100% INCREMENT IN SELF ROI



T&C APPLY- DIRECT SAME AND ABOVE PACKAGE
WITHIN 7 DAYS

PRIMETRADES.LIVE

SPONSOR INCOME



PRIME TRADES

5%

UNLIMITED
DIRECT



[PRIMETRADES.LIVE](https://www.primetrades.live)

LEVEL INCOME



LEVEL	INCOME
1	15%
2	10%
3	5%
4	3%
5 – 8	2%
9 – 15	1%
16 - 20	0.5%

LEVEL OPEN CONDITION:

1 DIRECT	2 LEVEL
2 DIRECT	4 LEVEL
3 DIRECT	6 LEVEL
4 DIRECT	8 LEVEL
5 DIRECT	10 LEVEL
6 DIRECT	20 LEVEL



SALARY INCOME



PRIME TRADES

MATCHING BUSINESS	INCOME	DURATION
\$1200	\$10	12 MONTHS
\$3500	\$25	12 MONTHS
\$7000	\$40	12 MONTHS
\$15000	\$70	12 MONTHS
\$30000	\$120	12 MONTHS
\$65000	\$200	12 MONTHS
\$1.5 L	\$400	12 MONTHS
\$3 L	\$700	12 MONTHS
\$7 L	\$1000	12 MONTHS
\$15 L	\$1600	12 MONTHS
\$30 L	\$2500	12 MONTHS
\$60 L	\$4000	12 MONTHS



PRIMETRADES.LIVE

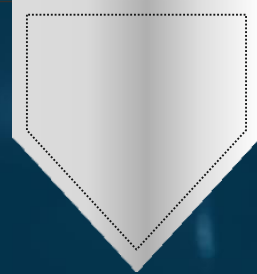


Rewards

Life time rewards will be calculated, 50% from your one referral team and another 50% from your whole referral team.

Matching
\$1200

Reward
\$15
Fund

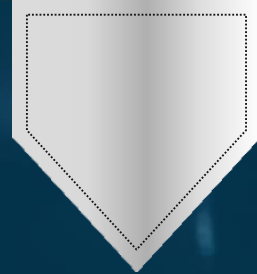


Rewards

Life time rewards will be calculated, 50% from your one referral team and another 50% from your whole referral team.

Matching
\$3500

Reward
\$40
Fund



Rewards

Life time rewards will be calculated, 50% from your one referral team and another 50% from your whole referral team.

Matching
\$7000

Reward
\$60
Fund



Rewards

Life time rewards will be calculated, 50% from your one referral team and another 50% from your whole referral team.

Matching
\$15000

Reward
\$135
Fund



Rewards

Life time rewards will be calculated, 50% from your one referral team and another 50% from your whole referral team.

Matching
\$30000

Reward
\$240
Fund



Rewards

Life time rewards will be calculated, 50% from your one referral team and another 50% from your whole referral team.

Matching
\$65000

Reward
\$400
Fund



Rewards

Life time rewards will be calculated, 50% from your one referral team and another 50% from your whole referral team.

Matching
\$1.5L

Reward
\$850
Fund

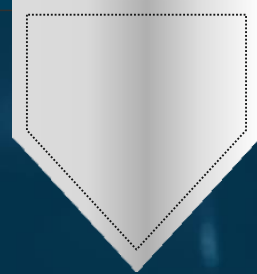


Rewards

Life time rewards will be calculated, 50% from your one referral team and another 50% from your whole referral team.

Matching
\$3.0L

Reward
\$1500
Fund

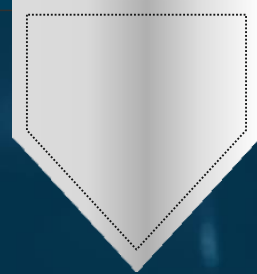


Rewards

Life time rewards will be calculated, 50% from your one referral team and another 50% from your whole referral team.

Matching
\$7.0L

Reward
\$2800
Fund



Rewards

Life time rewards will be calculated, 50% from your one referral team and another 50% from your whole referral team.

Matching
\$15.0L

Reward
\$4500
Fund



Rewards

Life time rewards will be calculated, 50% from your one referral team and another 50% from your whole referral team.

Matching
\$30.0L

Reward
\$7000
Fund



Rewards

Life time rewards will be calculated, 50% from your one referral team and another 50% from your whole referral team.

Matching
\$60.0L

Reward
\$12000
Fund



Why Choose PRIME TRADE

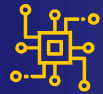
We are always here for you.



Management Team With Rich Experience Across Asia, UK & Europe.



Support through personal trainers, free Webinars & Online Curriculum on Forex & CFD Training



Superior Technology Solutions & Best Pricing.



Instant Withdrawal



Well Maintained Trained Professionals to Facilitate Portfolio Management



24*7 Support to Esteemed Clients





// Sometimes, it's the smallest **Decisions** that can change your **Life** forever. //



PRIMETRADES.LIVE



TERMS AND CONDITIONS



- **NON WORKING INCOME 3X.**
- **TOTAL CAPPING 6X.**
- **ADMIN DEDUCTION 10%**
- **WORKING WITHDRAWAL EVERY MONDAY.**
- **NON WORKING WITHDRAWAL MONTHLY.**
- **MINIMUM WITHDRAWAL \$10**



PRIMETRADES.LIVE

THANK YOU

WEBSITE - www.primetrades.live

ADDRESS- LIMASSOL ,CYPRUS.

Visit us For more information.....